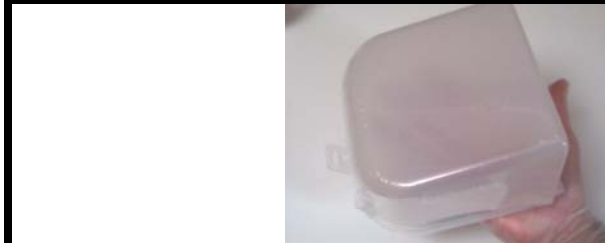


BlueBox™ Specimen Container Operating Instructions



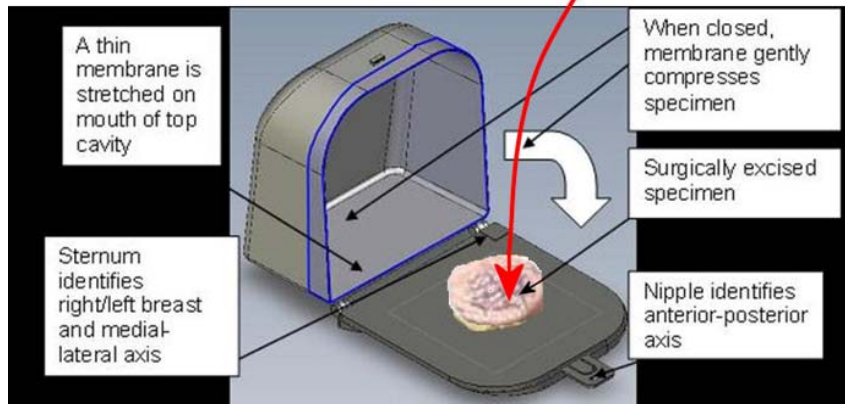
1. Select right or left breast container, and remove from bag.



2. Always hold the container from the bottom, as if you were holding a pizza box.



3. Have the surgeon place the specimen at the center of the container in the same orientation as it was excised from the breast. **THE CONTAINER IS NON-STERILE.**



4. Close the container and place it at the center of the x-ray unit for vertical imaging (nipple to the back)



5. Rotate container 90 degrees counter-clockwise at the center of the x-ray unit for horizontal imaging.

6. Place the container in its bag, affix patient info, and deliver to Pathology.